

CLEAN WATER — HEALTHY LAND

Tree & Shrub Program



Improving Overall Watershed Health Through Stewardship

Have you ever thought about planting trees or shrubs on your property?

If so, the Ganaraska Region Conservation Authority (GRCA) can assist you in your planting plans. Many options are available to landowners, and qualified staff can help you select the best methods to increase native trees and shrubs on your property.

What are the benefits of tree planting?

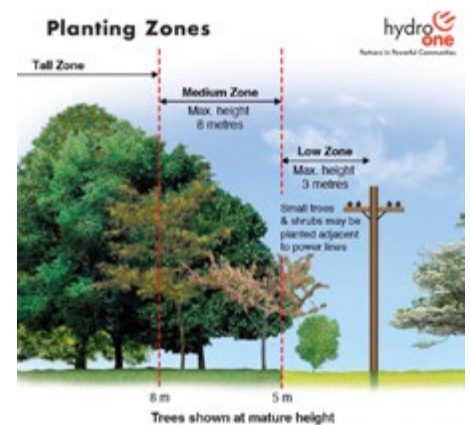
Together and through the use of native plants, a range of benefits can be accomplished.

Benefits for local watersheds

- Increased forest cover;
- Improved water quality;
- Increased resilience to changes in climate; and
- Reduced erosion, sedimentation and flood potential.

Benefits for you and your property

- Decreased home energy costs;
- Enhanced wildlife habitat;
- Potential in a decreased property taxes; and
- Increased property values and aesthetics.



Recommended Planting Zones



Ganaraska Region Conservation Authority
905.885.8173 | info@grca.on.ca
2216 Cty. Rd. 28, Port Hope, ON, L1A 3V8



Ganaraska Forest Centre (GFC)
10585 Cold Springs Camp Road
Campbellcroft, ON, L0A 1B0

CLEAN WATER — HEALTHY LAND

Tree & Shrub Program



GANARASKA REGION CONSERVATION AUTHORITY

2216 County Road 28,
Port Hope, ON,
L1A 3V8

Phone: 905.885.8173
Fax: 905.885.9824
Email: info@grca.on.ca

www.grca.on.ca

SUPPORTED BY:



Where To Start

Whether it's 1 tree or 10,000, we can help find the best option for you!

If you're unsure of where to start, call us today! GRCA staff can **set up a free site visit** to help assess a planting location, recommend suitable species, and develop a planting plan. Funding and grants may also be available to you.

DIY Planting

Once a planting plan is in place, consider planting trees yourself or with your family. Tree and shrub seedlings, grown by local reputable nurseries, can be ordered through the GRCA Tree Seedling Program. This program allows you to take advantage of bulk order prices.

- Minimum order of 25 seedlings of one species is required, with increments of 25 seedlings per species.
- Prices for trees and shrubs range from \$0.85 to \$2.50 per seedling.
- \$20.00 administration fee per order.
- Pick up is usually the last weekend in April.

Let the GRCA do the Planting!

Another option is to have the Ganaraska Region Conservation Authority plant for you through the [GRCA Tree Planting Program](#).

Seedlings are either **hand planted** or **machine planted**, depending on site conditions. The average cost for planting is \$2.50 per seedling but costs vary and are determined based on species, planting method, and tending. Eligible landowners must order a minimum of 500 seedlings, and funding is also available to help reduce costs.



Trees for Rural Roads

Get involved in restoring a cultural landscape feature in the Municipality of Clarington, Township of Hamilton and the Municipality of Port Hope by planting along rural roads with young native trees.

Property owners within the rural area of these municipalities can receive **up to 30 trees for free** when they agree to plant them along a road within the Municipality on their own property. Eight tree species are available and must be planted 20 to 40 feet or 6 to 12 metres apart.

Stream Bank Shrub & Tree Planting

If you do not have a lot of land for planting trees, you can still add the value of trees and shrubs to your property by **planting along stream, river and pond banks**. Vegetation along streams and rivers has many benefits such as: erosion control, enhancing wildlife habitat, and reducing waterflow and runoff.

Technical assistance and funding is available to landowners.